

A nighttime aerial view of a city with light trails from traffic on a multi-lane highway in the foreground. In the background, several skyscrapers are illuminated, including a prominent cylindrical building with a golden, tiered top and blue horizontal light bands. The sky is a deep blue with some light clouds.

Brief Introduction of Spunlace Production Line Project



Brief Introduction of

China High-Tech Group Corporation

CHINA TEXMATECH CO., LTD.

Introduction of CHTC



- Established in Sep. 1998, China High-Tech Group Corporation is a state-owned enterprise with textile machinery as its core business.
- High-Tech Group currently owns a total asset of 58 billion RMB, with 23 subsidiaries, 14 overseas companies and over 60,000 employees, as well as 6 companies listed either domestic or overseas.

58 Billion

Total Asset

23

subsidiaries

14

Overseas Companies

60000

Employees

6

Listed Companies

Introduction of CHTC



Member Enterprise

23 Main subsidiaries

- China Textile Industrial Corporation for Foreign Economic and Technical Cooperation
- China National Chemical Fiber Corp.
- China Silk Industrial Corporation
- China National Garments Group Corporation
- China Textile Science & Technology Co., Ltd.
- Hantrong Investment Co., Ltd.
- Sinatex S.A.DE.C.V
- Hi-Tech Fiber Group Corporation
- China Hi-Tech (Jiangxi) Textile Design Institute Co., Ltd.
- CHTC Industries (Weifang) Co., Ltd
- CHTC Investment Management Co., Ltd
- CHTC Engine Co., Ltd.
- CHTC Holdings Co., Ltd.(The Subsidiary - Fong's Industries Company Limited)
- CHTC KAMA Co., Ltd.
- Shenyang Zhongheng New Materials Co., Ltd.
- CHTC Real Estate Co., Ltd.
- CHTC Heavy Industry Co., Ltd
- China Garments Co., Ltd.
- Zhengzhou Hi-Tech Non-woven Technology Co., Ltd.(The Subsidiary - Autefa Solutions Group)
- Swan Fiber Co., Ltd.
- Shandong Helon Co., Ltd.
- Jingwei Textile Machinery Co., Ltd.
- Hongda Investment Co., Ltd.

Introduction of CHTC



Member Enterprise

6

Listed Companies

- Jingwei Textile Machinery Co., Ltd. (000666)
- CHTC KAMA Co., Ltd. (900953)
- Swan Fiber Co., Ltd. (000687)
- China Garments Co., Ltd. (000902)
- Shandong Helon Co., Ltd. (000677)
- Fong's Industries Company Limited (HK.00641)

Introduction of CHTC



CHTC in Textile Machinery

- The core business of CHTC
- No.1 in the textile machinery supplier in China
- World's top supplier of textile machinery in terms of product variety and complete equipment capacity.
- Main products:
cotton textile whole process equipment, synthetic fiber complete equipment, printing and dyeing ccomplete equipment, non-woven cloth complete equipment and textile machinery special parts



Introduction of CHTC



Major company in Textile Machinery



Jingwei Textile Machinery Co., Ltd.



Autefa Solutions



CHTC Heavy Industry Co., Ltd



Fong's Industries Company Limited



Introduction of CHTC



Location of the Branches





Distribution



CHINA TEXMATECH CO., LTD.



Brief Introduction of Spunlace Equipment

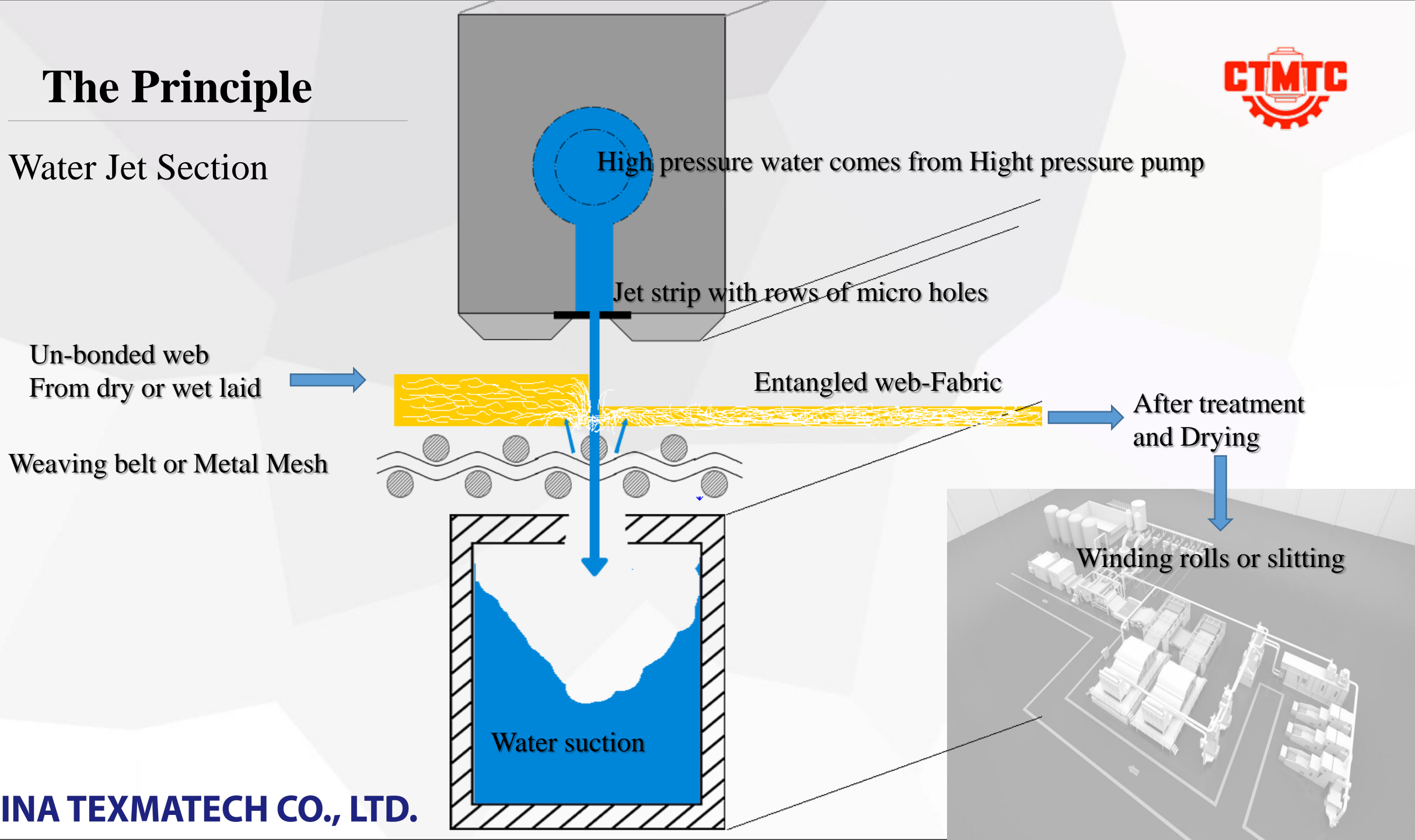


What is Spun-lace?

The Principle

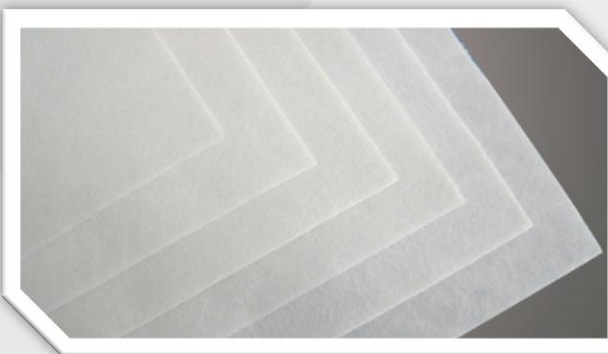


Water Jet Section



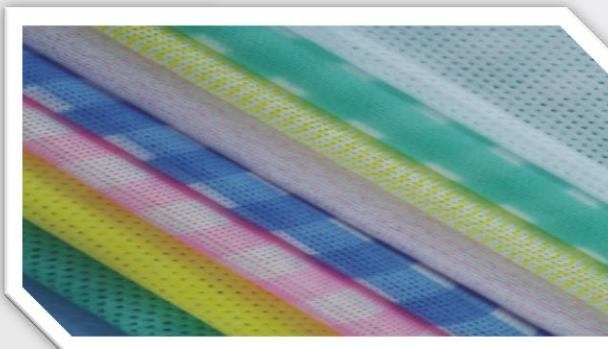
Applications

WET TISSUE



Hygienic Materials

WIPES



MEDICAL MATERIAL



FACIAL MASK



Applications



Artificial Leather Substrate

Lining Material



PU Leather Substrate



PVC Leather Substrate

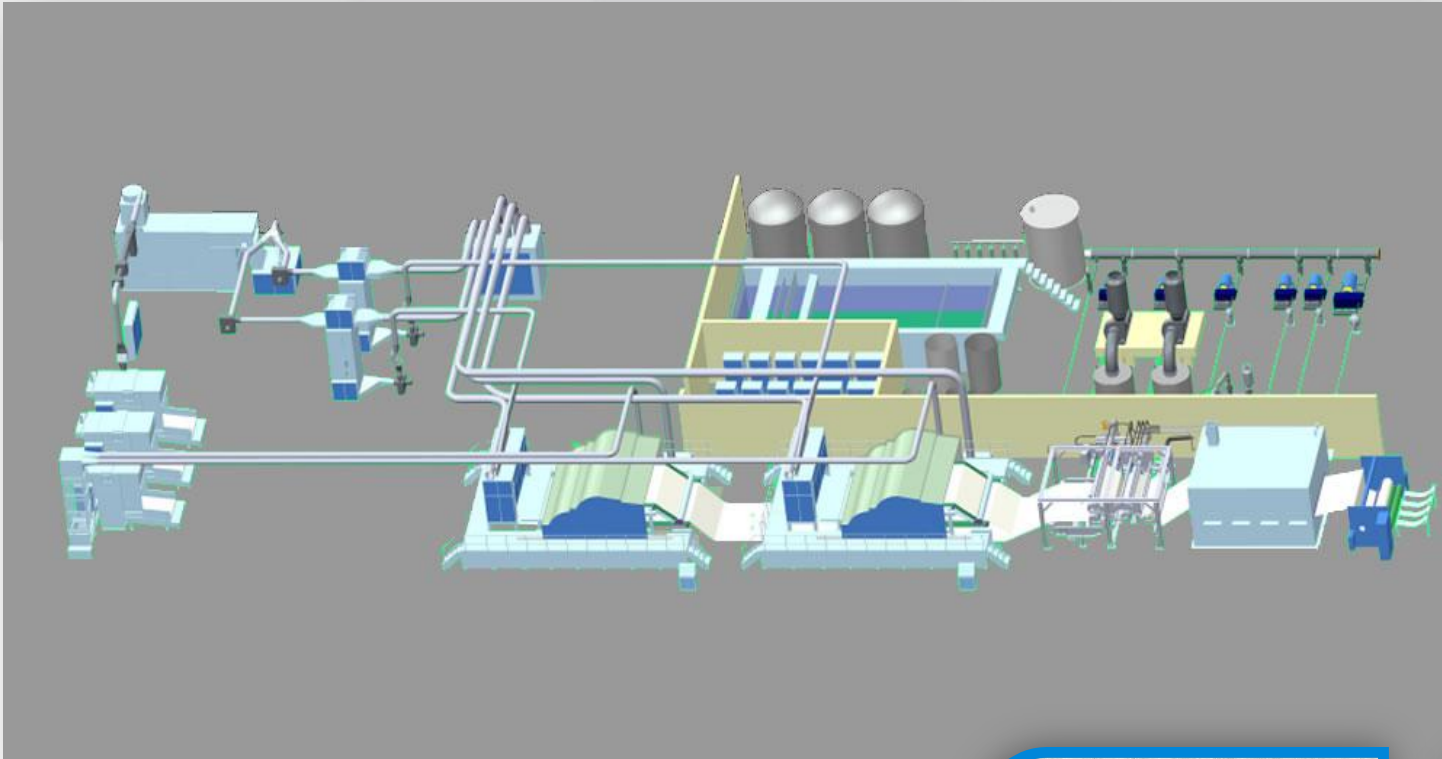




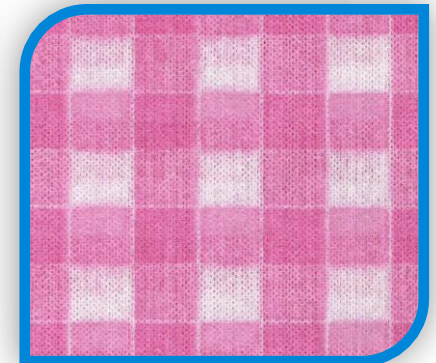
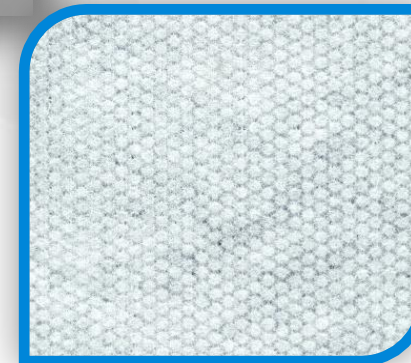
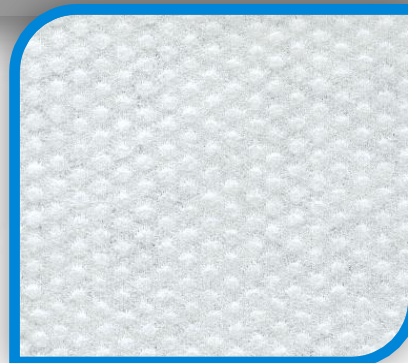
Classic Machine Flow Chart

Hygiene Spunlace Line (Dry-laid by Roller Carding)

2 Carding Parallel Line

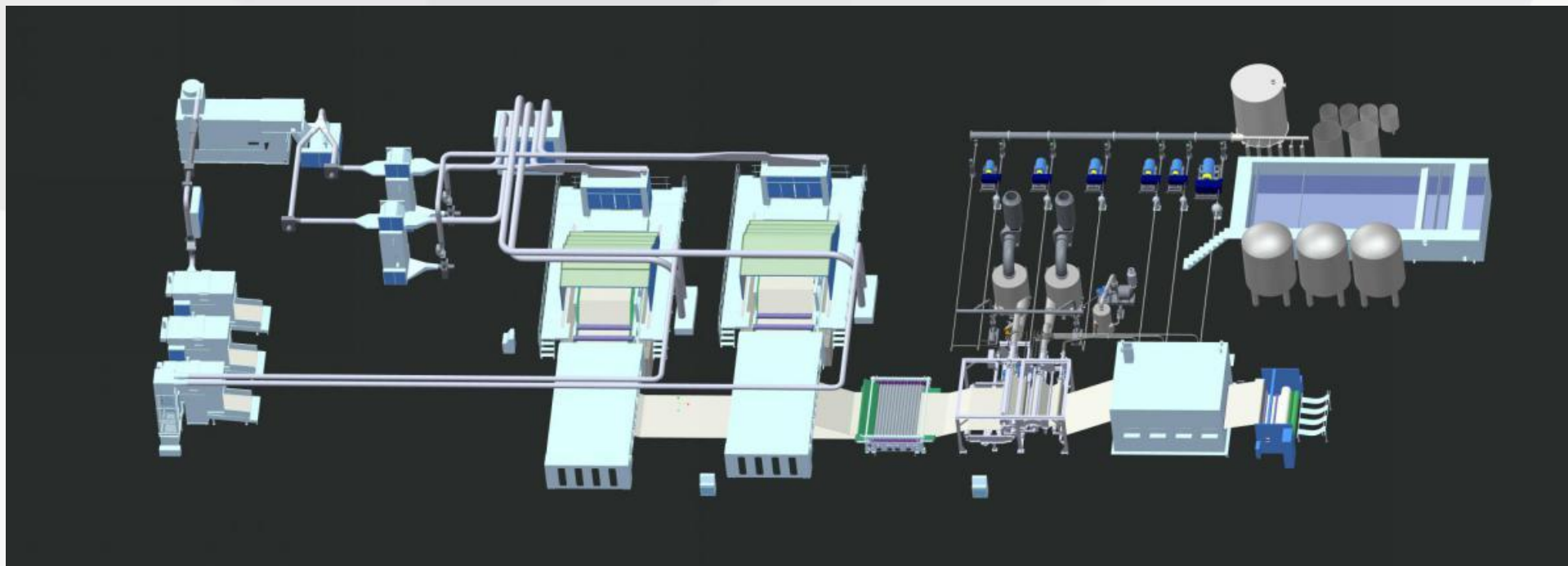


- Wet / dry tissue, wiping material
- 30-80gsm
- Viscose, Polyester.
- Plain, Perforated, Dots, Printing & Dipping



Leather Substrate Spunlace Line (Dry-laid by Roller Carding)

2 Carding 2 cross lapper Line

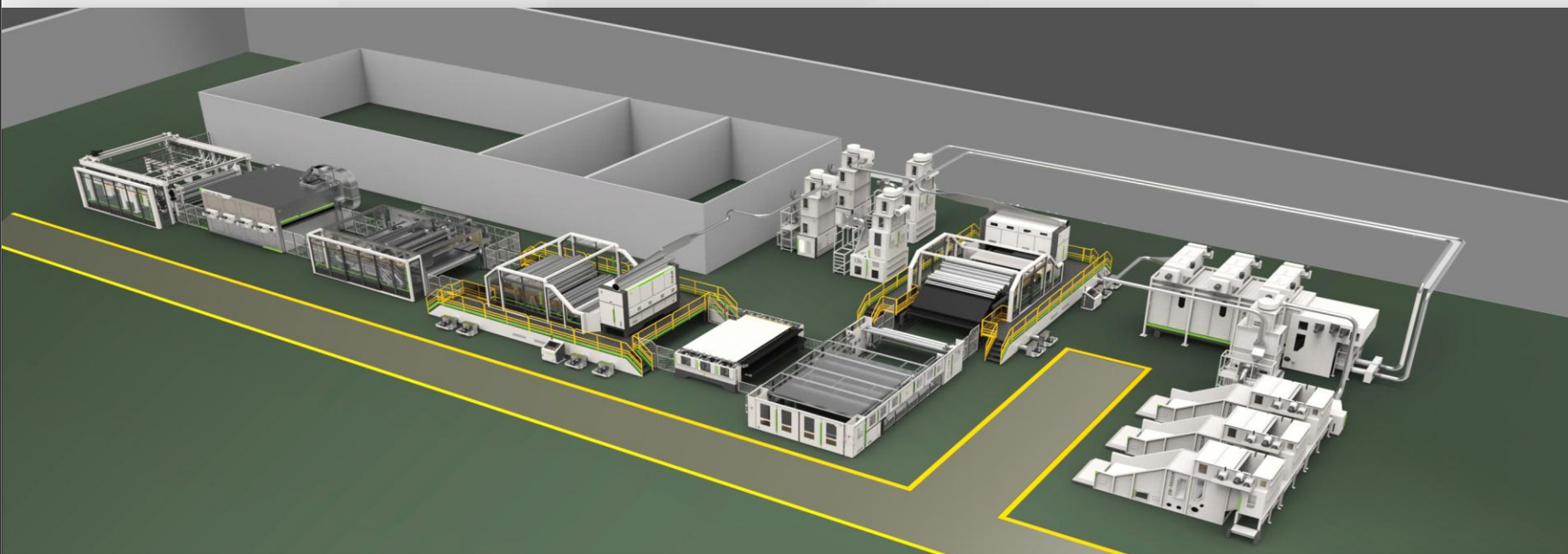


- Spunlace line for leather substrate
- 45-200gsm
- Viscose, Polyester.
- Plain, Printing & Dipping

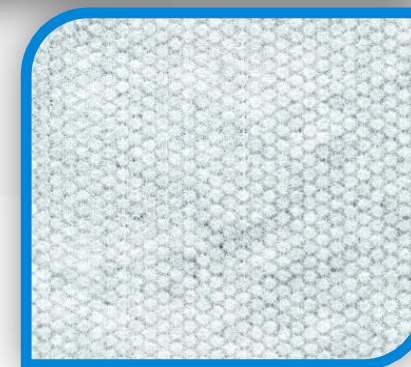
CHINA TEXMATECH CO., LTD.



Multifunctional Spunlace Line (Dry-laid by Roller Carding)

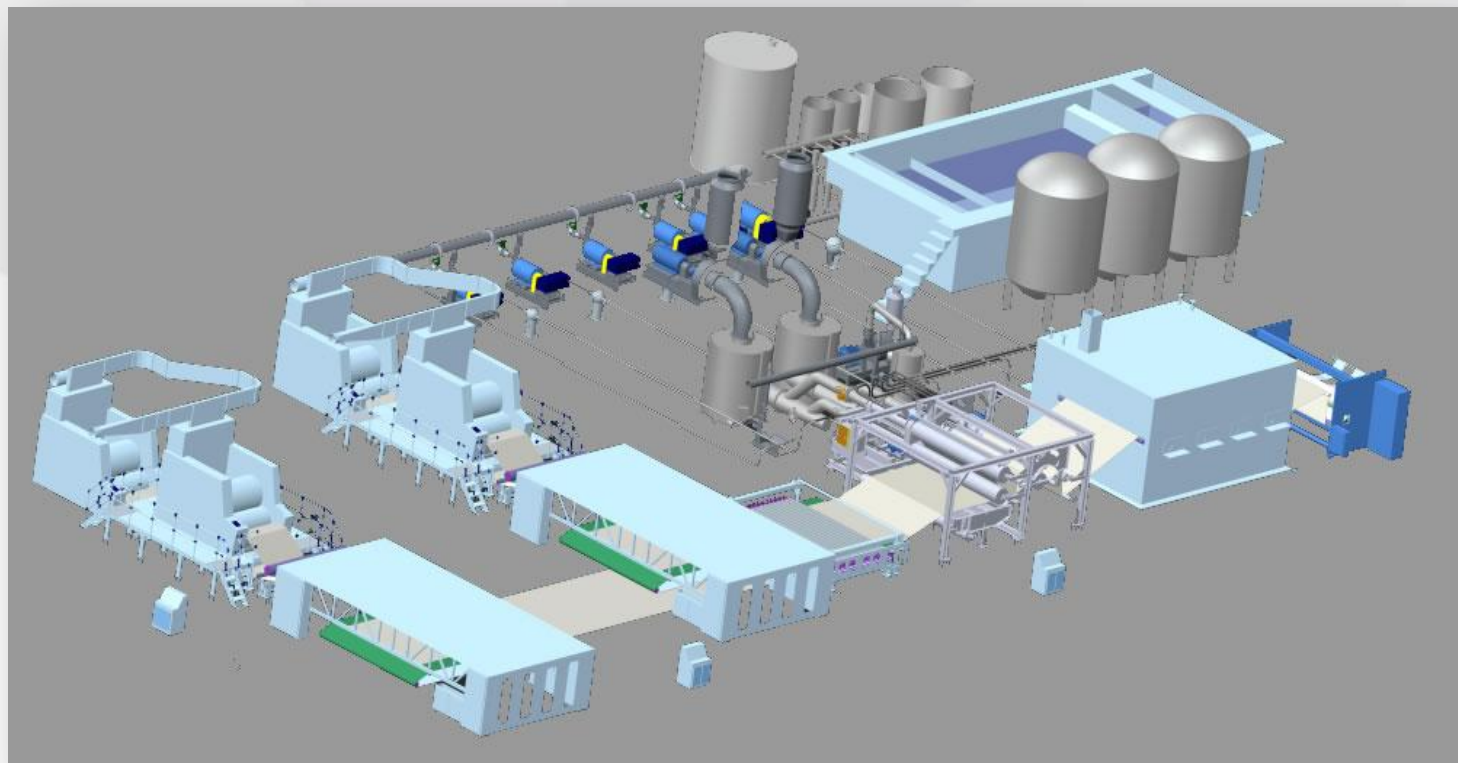


- Dry soft towel, PU/PVC leather substrate
- 40-120gsm
- Viscose, Polyester, Degreasing Cotton
- Plain, Printing & Dipping



CHINA TEXMATECH CO., LTD.

Cotton Spunlace Line (Dry-laid by Flat carding)

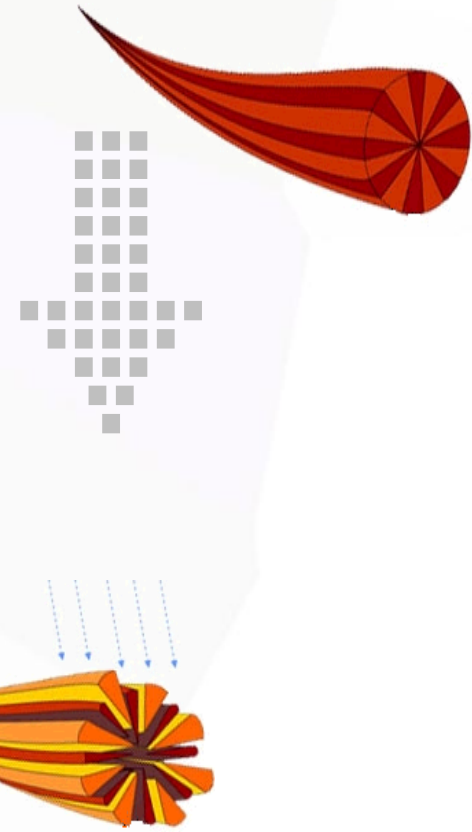
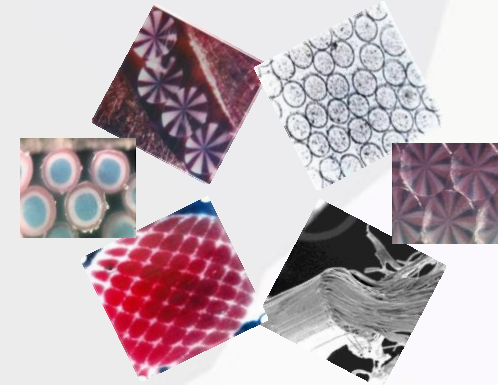
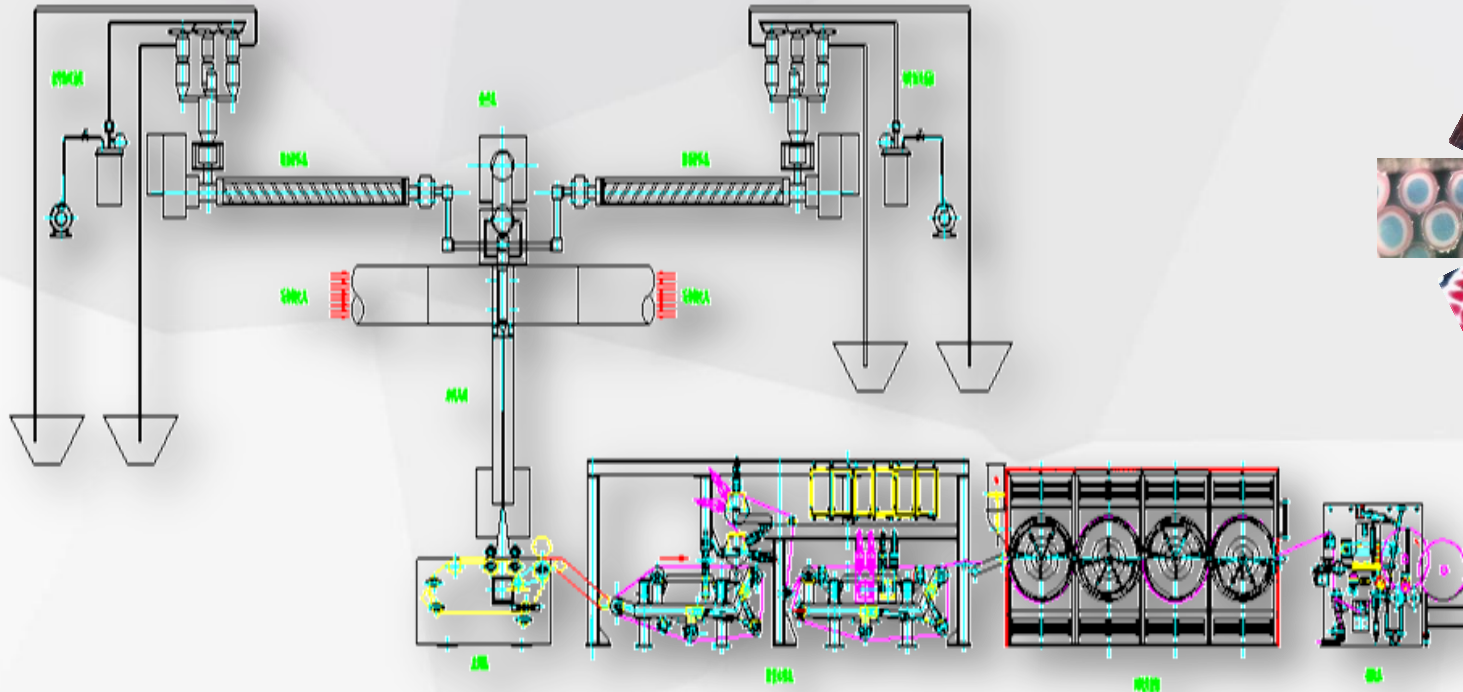


- Cotton dry/wet tissue, cotton cosmetic pads
- 40-80gsm; 180-240gsm
- Degreased cotton, bamboo fiber, viscose



CHINA TEXMATECH CO., LTD.

Bi-component Spun-bond + High Pressure Spunlace



- PA6 Chips, PET Chips
- 15gsm for mask
- 50gsm for Artificial leather substrate and wiping material



CHTC Supplies Whole Line Project

Turnkey Project

Full Experience for project overseas market

Famous Brand Key parts

Machine with CE & ISO9001 Certificate

Recipe for Winning in the Market



Turnkey

Help customers to start from scratch to a running factory.



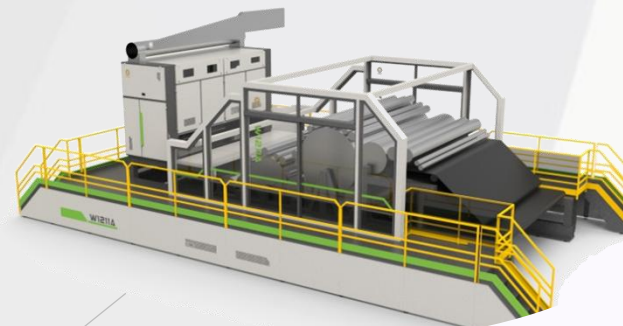
Real Whole-Line

All main equipments are made by CHTC

Best Parts& Material

Use the best parts & materials in the industry

One Stop For All machine for a Line



- One source for all machines,
- One source for all services.
- One stop for all



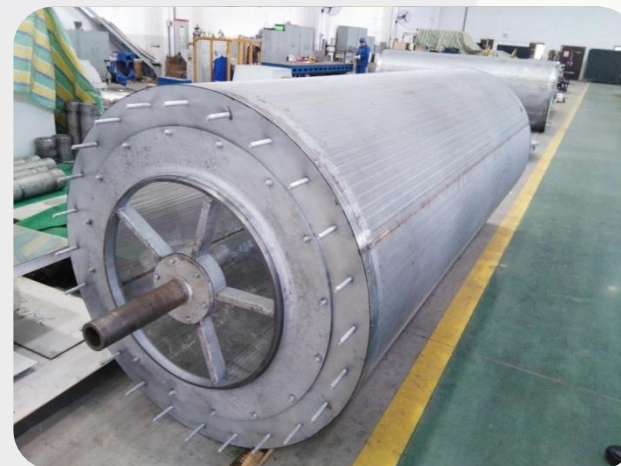
Manufacturing Ability to Ensure the Quality



- Well established manufacturing facilities
- All major parts made by ourselves, ensures quality

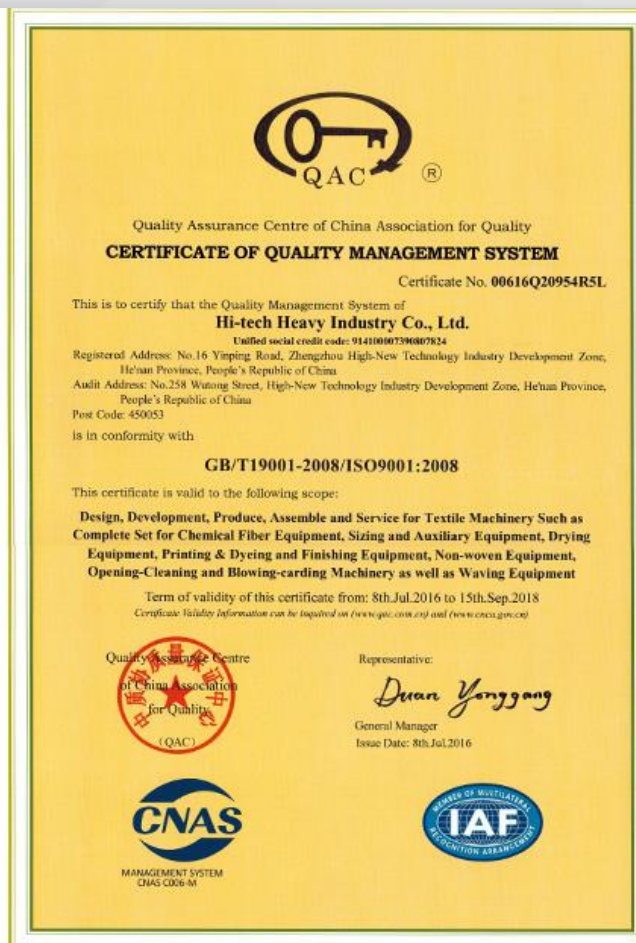


Manufacturing & Assembly in CHTC



CHINA TEXMATECH CO., LTD.

Machine with CE & ISO9001 Certificate



Partnership with Famous Brand



OMRON

FESTO



REQ/ASS

GROZ-BECKERT®

SIEMENS



TECO

Enka Tecnica
REIFENHÄUSER GRUPPE

URACA

SEW
EURODRIVE

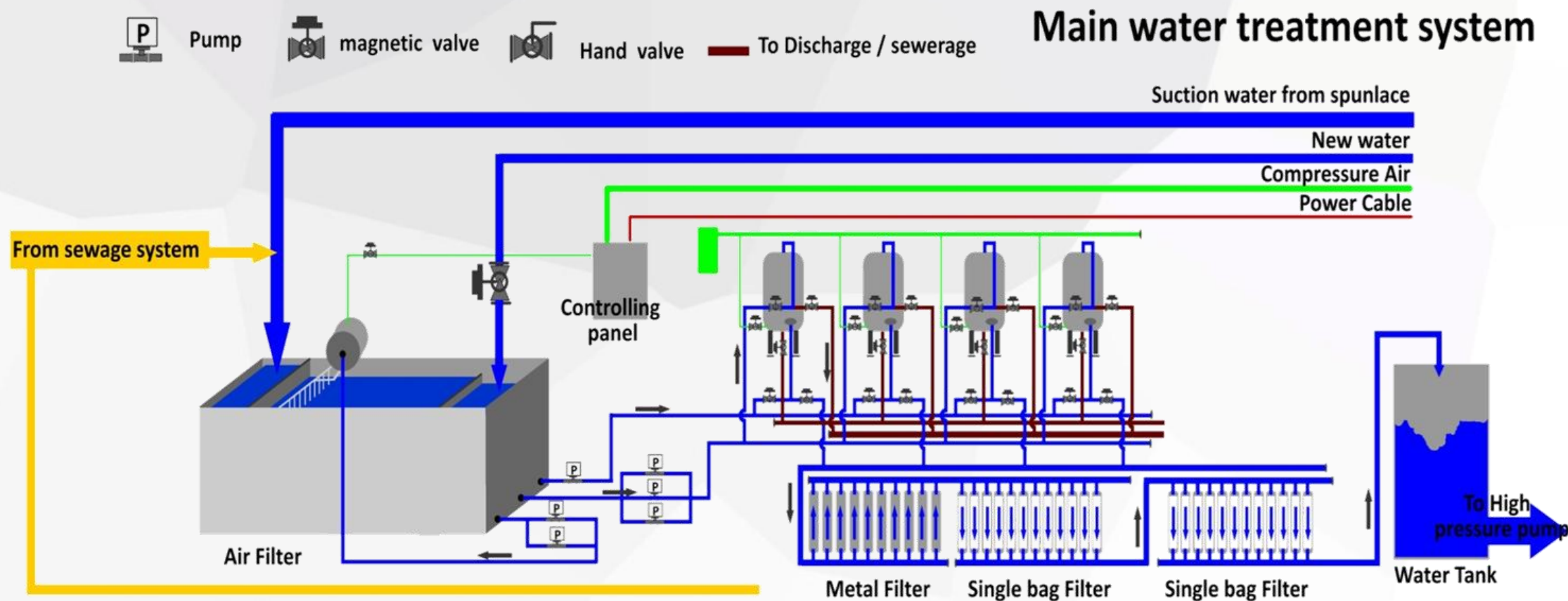


Schneider
Electric

habasit

ALBANY
INTERNATIONAL

Water Treatment System for Spunlace Line



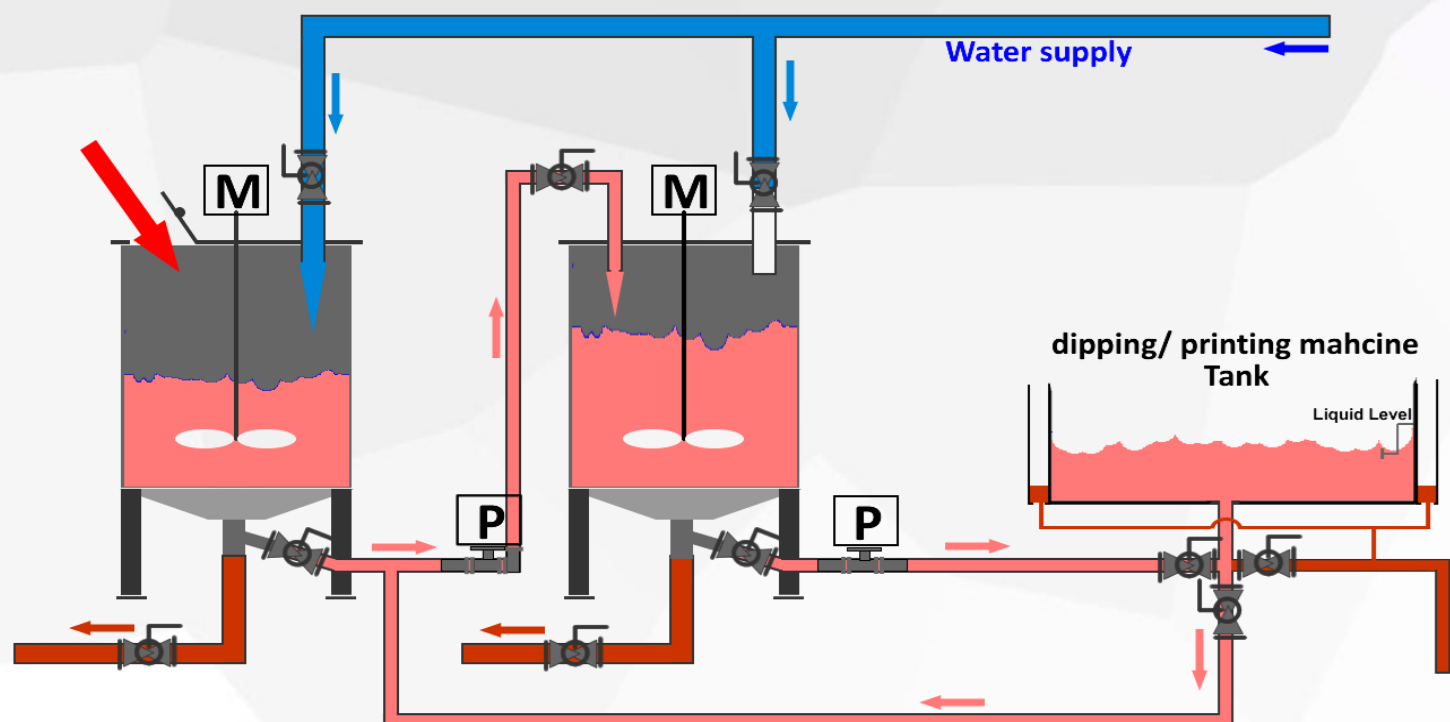
Dipping and Printing System Online Fabric

Only for reference, real machine may little different design,



HI-TECH HEAVY INDUSTRY CO.,

All pipe and pipe fittings should adopt SS or PVC



Testing Machine





Raw Material Supplying and Product Market Supporting





High Market Share and Full Experience

- Market-proven Supplier
- Big Customer Base to improve products
- Supplied 260 nonwoven lines all over the world
- Deep Market player-we know the market for more than 20 years



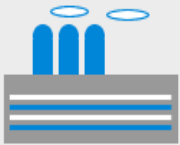
Marketing Share in China is More Than 70%



Export market

Iran
Russia
Mexico
Turkey
Vietnam
German

Professional Design and Utilities Data



- Design the reasonable and customized machine arrangement whatever for customers' existing workshop or new building



- Calculate the total installation power after the beginning of design and also recommend customer the suitable transformer capacity



- Full set of drawing according to the process step

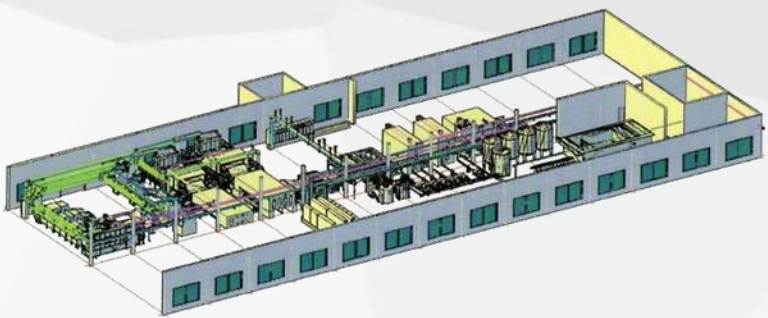


- Others



TURKEY

水刺生产线一期工程
SPUN - LACED NO. 1



恒天重工股份有限公司
HI-TECH HEAVY INDUSTRY CO., LTD.

二〇一六年九月



恒天重工股份有限公司 HI-TECH HEAVY INDUSTRY CO., LTD. CHTC		DRAWING CONTENT		SERIAL NO. : TR01-00-10-01	
		TURKEY RAMDER SPUN-LACED NO. 1	DESIGN:	王书行	NO. OF EDITION: NO. 1
			CHKD	朱园园	
			APPR	王少平	
				F. APPR	李新奇
				DATE: APRIL, 2016	
				PHASE: WORKING DESIGN	
序号 No.	图纸名称 Drawing Name	图号 Drawing No.	图纸 张数 Qty.	图纸尺 寸 Size	备注 Note
一	说明类文件 File				
1	图纸目录 Drawing Content	TR01-00-10-01	3	A4	Page 1-3
2	设备一览表 Schedule of Equip.	TR01-00-10-02	5	A4	Page 4-8
3	工程图纸编号说明 Serial No. of Engineering Drawing	TR01-00-10-03	1	A4	Page 9
4	设备标注及编号说明 Note and Serial NO. of Equip.	TR01-00-10-04	1	A4	Page 10
5	仪表编号及图例说明 Serial No. and cutline of instrument	TR01-00-10-05	3	A4	Page 11-13
6	管道标注及编号说明 Note and Serial No. of pipeline	TR01-00-10-06	5	A4	Page 14-18
7	管道、管架材料表 Material list of pipeline and holder	TR01-00-10-07	6	A4	Page 19-26
8	电气系统设计、施工说明 Design and Construction of electric system	TR01-00-10-08	3	A4	Page 27-29
9	变压器负荷计算表 Loading caculating table of transformer	TR01-00-10-09	4	A4	Page 30-33
10	低配动力电缆表 Cable table of low-matched drive	TR01-00-10-10	2	A4	Page 34-36
11	设备动力电缆表 Cable table of drive	TR01-00-10-11	23	A4	Page 37-62
12	控制电缆表 Control cable	TR01-00-10-12	26	A4	Page 63-89
二	设备、预留预埋布置图 Layout of equip. and pre-burying				
1	工艺设备布置图 Layout of process equip.	TR01-10-11-01	2	A2X4	
2	设备预留预埋布置图 Proformed and pre-buried layout of equip.	TR01-10-11-02	1	A2X3	



现场安装服务记录及交接单 Machine Hand-over And Performance Delivery

合同号 (Contract No.)	2016-XXX	Document Ver.	v2.1	Document
客户名称 (Customer Name)	XXXXXXXXXXXXXXXXXXXXXXX.A.S.			
公司地址 (Company Address)	XXXXXXXXXXXXXXXXXXXXXXX			
工厂地址 (Factory Address)				
安装设备 (Machine Erected)	一套3.5M水刺无纺布生产线设备 One Set of 3.5M Nonwoven Spunlace Production Line Equipment			
安装团队 (Engineer Team)	指导安装时间 (Staying Time)			
人员名单 (Name List)	出发 (Arriving)	返回 (Return)	时间 (Days)	满意 (Satisfy)
1 Mr. Wang Huanbo	2017/3/13	2017/4/13	32	
2 Mr. Hu Wei	2017/3/13	2017/4/17	36	
3 Mr. Wen Zhang	2017/3/13	2017/5/17	66	
4 Mr. Tian Habin	2017/3/13	2017/5/17	66	
5 Miss. Wang Xiaoyu	2017/3/13	2017/5/17	66	
6 Mr. Li Feng	2017/3/13	2017/5/27	76	
7 Mr. Ma Zhiming	2017/4/10	2017/7/9	91	
			Total: 433	

主设备到货及开箱检验记录 (Record of arrived goods & inspection)	
包装 Packing:	<input type="checkbox"/> 好 good <input type="checkbox"/> 破损 broken(enclose table if any)
装箱 Encasement:	<input type="checkbox"/> 好 good <input type="checkbox"/> 缺件 Part missing (enclose table if any)
零件加工质量 Parts quality:	<input type="checkbox"/> 好 good <input type="checkbox"/> 差 bad (enclose detail info if any)
详细信息(如有)Details Info(if any):	

备件开箱清点/验收/移交记录 (Record of Hand-over of spare parts)	
装箱 Encasement:	<input type="checkbox"/> 好 all right <input type="checkbox"/> 缺件 missing (enclose table if any)
移交情况 Hand-over:	<input type="checkbox"/> 已移交 Yes <input type="checkbox"/> 没有 No

ERECTION SUPERVISION AGREEMENT

This Agreement is made by and between the following two Parties

Hi-Tech Heavy Industry Co., Ltd, China (Part A)
258 Wutong Street Zhengzhou City Henan China
(the captioned Contract's Seller, hereinafter called "Party A")

and
«Plastcomp» Co. Ltd, RF, Saint-Petersburg, (Part B)
Add: RF, Saint-Petersburg, Salova st. 27 lit.N Russia.
(The captioned Contract's Buyer, hereinafter called "Party B")

Whereby Party A, at the invitation of Party B, agrees to send an Erection Supervision Team called the "EST") to the mill site of Party B to work on the terms and conditions set forth below.

Article I. Qualification and Charges

Item	Qualification	No. of Engineer	Duration (Days)
1	Mechanical Engineers	4-5	Total in 110 days (including installation 90 days and commissioning training 20 days)
2	Electronic Engineers	2-3	
3	Coordinator (English language skills)	1-2	

EST team payment of allowance afford by Part B:

US\$ 30.00/- per day per person by cash;

Air tickets: Party B shall provide prepaid return tickets by economy class, between nearest airport in P. R. China and SITE.

Boarding & Lodging: Party B shall provide boarding & lodging & Local Transportation to the charge for entire durations of erection

Remark: If the EST cannot finish their work within the above mentioned duration, for the reason of Party B

Date: Nov.10

Installation, commissioning and running schedule

(open box inspection check) OBI :	1	2	3	4	5	6	7	8	9	10	11	12
mechanical installation												
1 centering on the ground for each unit and prepare foundation	2											
2 Open box inspection check		2										
3 Put units into position			2									
4 MH591A-250 Squeezer				1	1	1	1					
5 CJFY2002-250 printing machine				1	1	1	1					
6 MH602Z-250 Cylinder dryer				1	1	1	1	2	2	2	2	2
7 W2728-250(2) Rotary screen dryer				1	1	1	1	2	2	2	2	2
8 W2801C Auto-winder				1	1	1	1					
electrical												
9 Open box inspection check										1		
10 wiring for each unit										1	1	
11 soft program commission												1
12 connect with the whole line in phase												
Test running												
13 Unit test running and start-up												
14 whole line testing without material												
15 mechanical and electical trainning 2 days.												
16 whole line running products	2	2	5	5	5	5	4	4	4	6	5	5
manpower requirement												

Seaworthy Package



CHINA TEXMATECH CO., LTD.

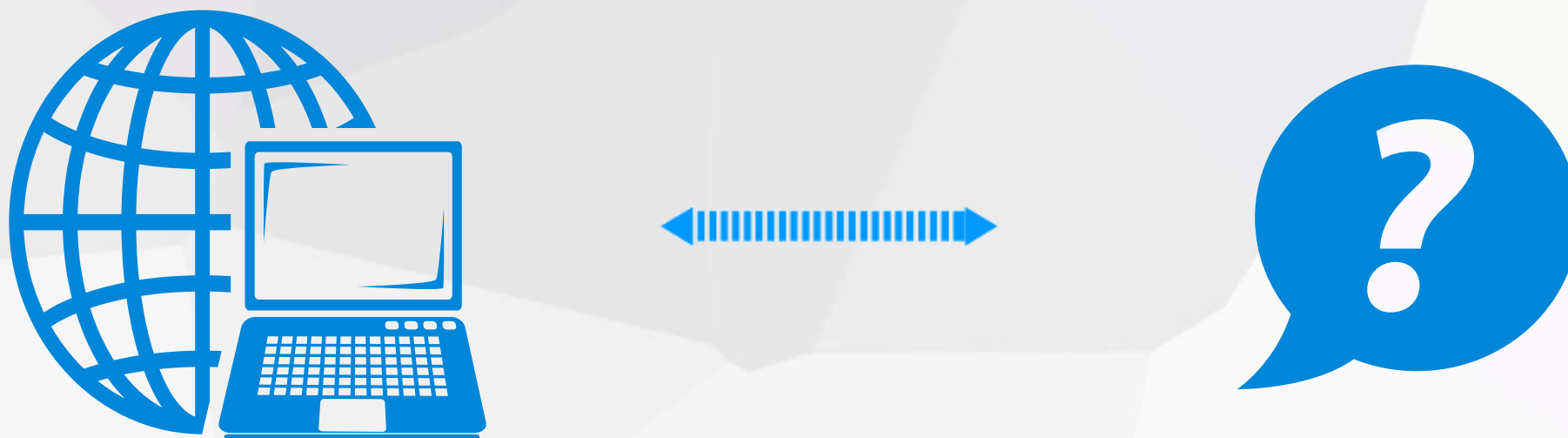
Commission & Installation & After-service



- A professional after-sales service team is always ready for customer service.
- Experienced Technologist can help new-comer set up a successful factory in a short time and help customer train staff.



Supplying Remote Service Response in 24 Hours by Internet



Remote checking and diagnosis system enables engineers to look at the problem simultaneously from computer and do diagnosis so as to help customer to solve the problem.

Pictures of the Production Line



CHINA TEXMATECH CO., LTD.

Pictures of the Production Line





Financial Support

- One Belt and One Road Policy
- Already provided over 500 Million USD financing support including Indonesia and Vietnam Market etc.
- Max seven years buyer's credit or supplier's credit financing support according to contract value and buyer's credit position .





Thanks